



INTRODUCING THE MAGIC FILM LOCATION
ROUDNICE CASTLE

ROUDNICE NAD LABEM

INTRODUCING Roudnice Castle

Roudnice Castle, which historically served as the princely and Ducal seat of the Lobkowitz family, is perched above the Elbe River in the heart of the historic town of Roudnice nad Labem, approximately 50 km north of Prague.



Our most popular location for films, this grand Baroque castle with over 200 rooms offers ample space and versatility. From the Romanesque castle, cellars of the castle winery to intricate parquet floors to the 17th-century chapel boasting magnificent frescoes, **this historic setting offers a variety of unique architectural features.**

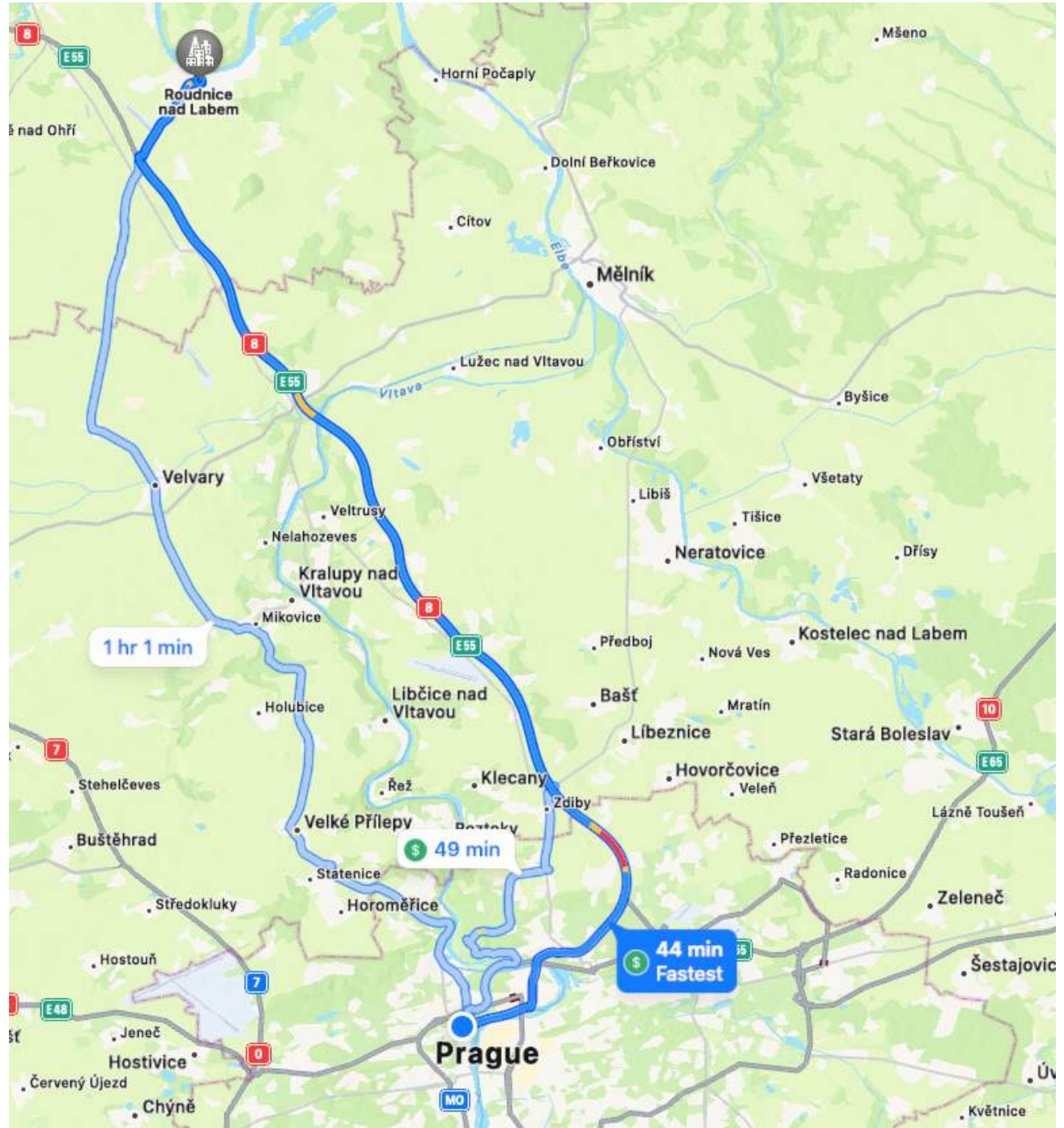
Throughout the 20th-century periods of confiscation under the Nazi and Communist regimes, the building was used as a Nazi training school and a military music school, respectively.

To learn more about the Castle and its history, visit our [website](#).

TRAVEL TIMES

50 km from Prague
(4,3 km from the highway)

-  45 minutes - car, van
-  75 minutes - trucks



LOCATION DETAIL

Roudnice nad Labem





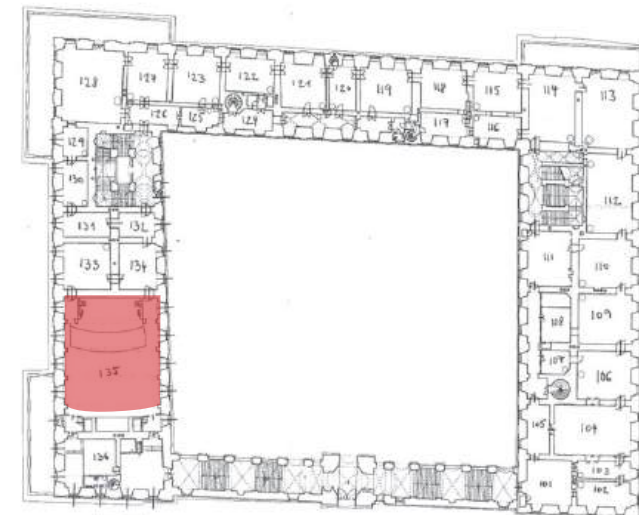


SET #1
CASTLE BUILDING

SET #1 - CASTLE BUILDING Theater

Location	Castle, west wing, 1st floor
Access	stairs
Dimensions (m)	19,6 x 16,6
Room height (m)	5,5
Access to water	no
Electricity	yes
Electric power	220/380V
Drilling possible / walls	yes
Drilling possible / ceiling	yes
Floors need to be covered	yes
Furniture	theater chairs, podium
Heating	no
Smoke effects, strong lights	allowed
Additional notes:	

- yellow walls with stucco
- possible movie projection
- Theater/auditorium in the west wing seats 190 people
- Comes complete with a projector for film screening



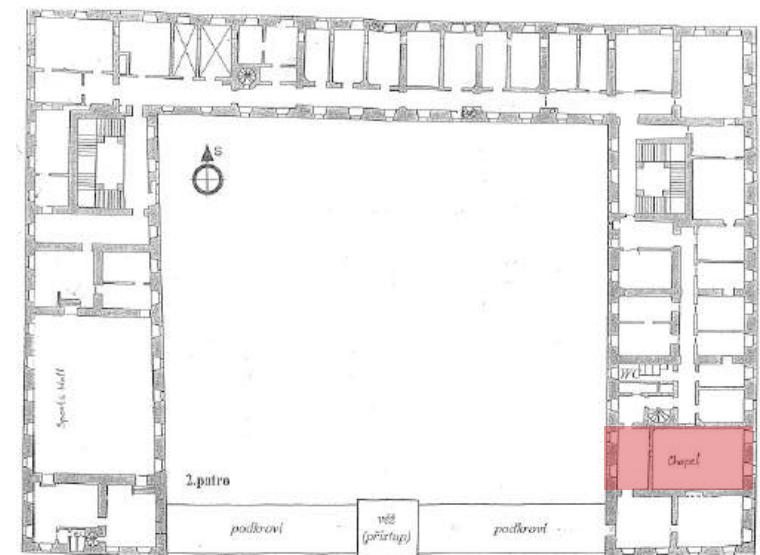


SET #1 - CASTLE BUILDING

Chapel

Location	Castle, east wing, 2nd floor
Access	stairs
Dimensions (m)	13 x 8,50
Room height (m)	14
Access to water	no
Electricity	yes
Electric power	220V
Drilling possible / walls	no
Drilling possible / ceiling	no
Floors need to be covered	yes
Furniture	no furniture
Heating	no
Smoke effects, strong lights	upon agreement
Additional notes:	

- walls with historical frescoes
- double-height room



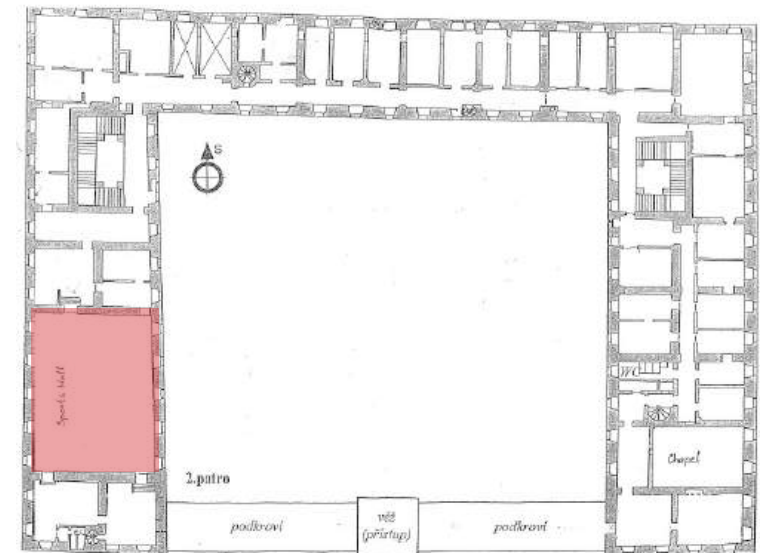


SET #1 - CASTLE BUILDING

Gym

Location	Castle, west wing, 2nd floor
Access	stairs
Dimensions (m)	22,6 x 16,6
Room height (m)	6
Access to water	ne
Electricity	yes
Electric power	220 V
Drilling possible / walls	yes
Drilling possible / ceiling	yes
Floors need to be covered	yes
Furniture	no furniture
Heating	no
Smoke effects, strong lights	allowed
Additional notes:	

-Gymnasium space has full-sized basketball court and adjacent locker rooms spaces and shower facilities



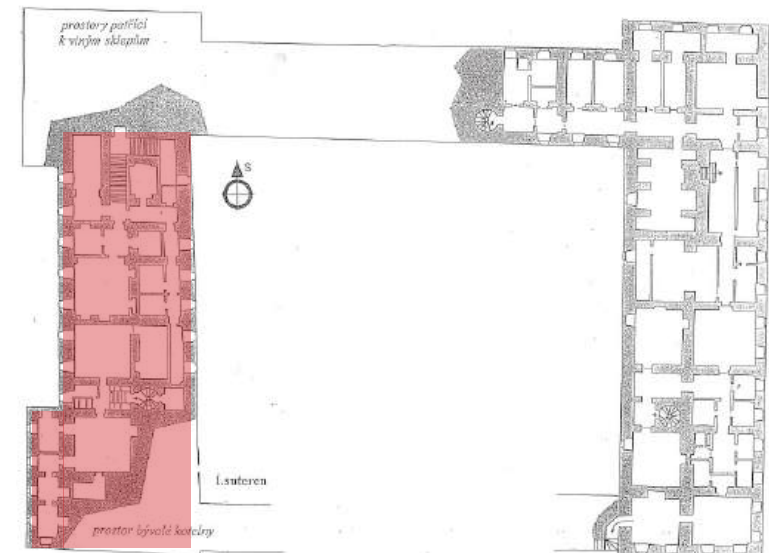


SET #1 - CASTLE BUILDING

Romanesque castle and Winery

Location	Castle, sub-floor
Access	stairs
Dimensions	cluster of smaller spaces
Room height	x
Access to water	no
Electricity	yes
Electric power in ampers	220 V
Drilling possible / walls	no
Drilling possible / ceiling	no
Floors need to be covered	yes
Furniture	no furniture
Heating	no
Smoke effects, strong lights	allowed
Additional notes:	

-currently also cellars used for wine degustations







SET #1
ADDITIONAL PHOTOS
CASTLE BUILDING











SET #2
CHURCH AND MONASTERY

SET #2 - CHURCH

St. Wenceslas Church

Location	Church
Access	no stairs
Dimensions (m)	23 x 9
Room height (m)	12,3
Access to water	no
Electricity	yes
Electric power	220/380V
Drilling possible / walls	yes
Drilling possible / ceiling	no
Floors need to be covered	yes
Furniture	no furniture
Heating	no
Smoke effects, strong lights	allowed
Additional notes:	

- Together with the former Capuchin monastery, it is located in the castle grounds east of the town centre, and as part of the castle it is protected as a cultural monument





SET #2 - MONASTERY

Capuchin Monastery building

Location	adjacent to Church
Access	stairs/ 2 floors
Dimensions (m)	cluster of smaller spaces
Room height (m)	x
Access to water	no
Electricity	yes
Electric power	220/380V
Drilling possible / walls	yes
Drilling possible / ceiling	yes
Floors need to be covered	no
Furniture	no furniture
Heating	no
Smoke effects, strong lights	allowed
Additional notes:	





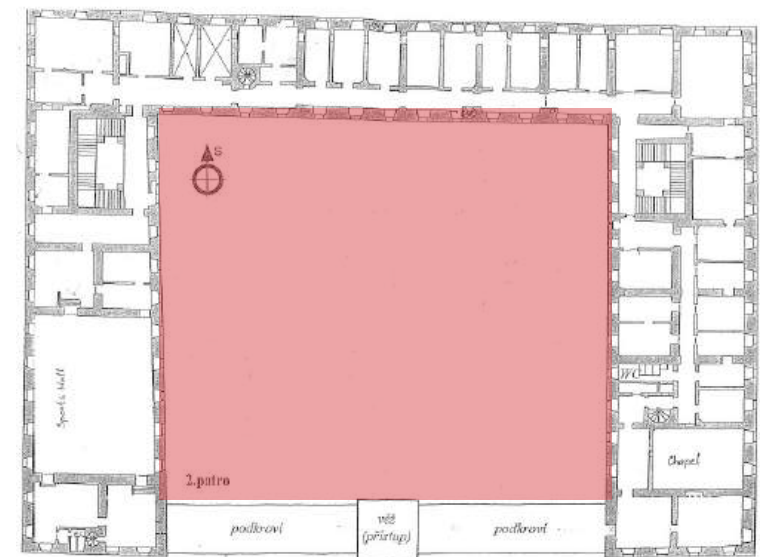


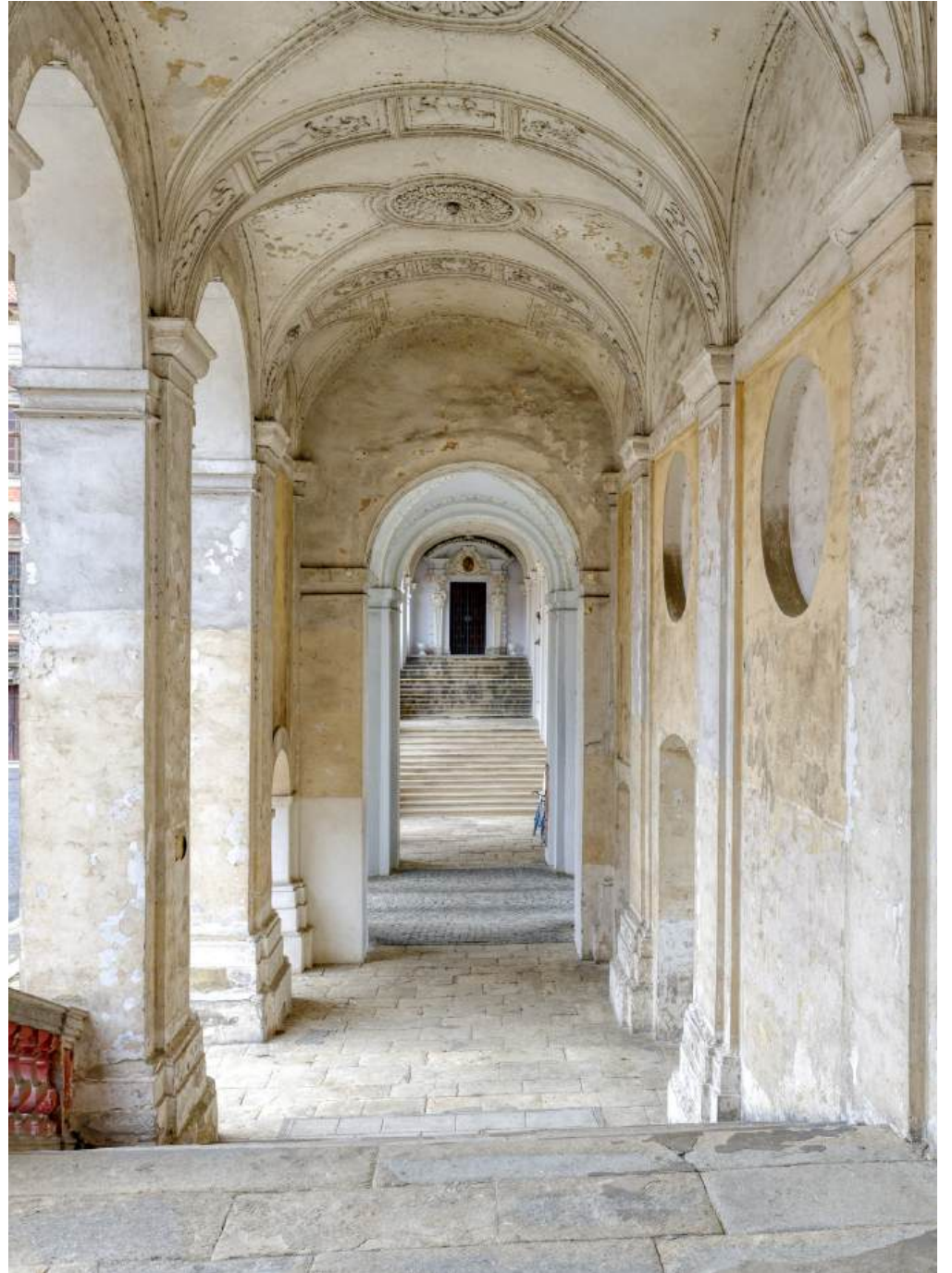


BASE #1
CASTLE BUILDING

BASE #1 - CASTLE BUILDING Courtyard

Location	Castle, courtyard
Access	main gate
Dimensions (m)	55 x 50
Access to water	yes
Electricity	yes
Electric power	220/380V
Drilling possible / walls	no
Floors need to be covered	no
Smoke effects, strong lights	allowed
Additional notes:	
- (2 800 m ²) courtyard	





BASE #2 - BACKYARD PARKING LOT

PARKING LOT	
Access	from main street
Dimensions (m)	65 x 32
Access to water	yes
Electricity	yes
Electric power	220/380V
Floors need to be covered	no

BASE #3 - GREENFIELD

GREENFIELD	
Access	from main street
Dimensions (m)	60 x 50
Access to water	no
Electricity	no
Floors need to be covered	no







*Thank you for your attention and we
are looking forward to working with you.*

www.lobkowicz.cz